



MAVERICK®

COMMERCIAL CARPET & TILES

CARPET TILES



COMMERCIAL
FLOORING



MAVERICK®
COMMERCIAL CARPET & TILES

CARPET TILES



Hospitality



Office



Retail



Care

6 products - a complete commercial carpet tiles portfolio

MAXIMA MEDUSA MATRIX MARVEL MAMBO MANTRA



MAVERICK[®]
COMMERCIAL CARPET & TILES

CARPET TILES

- Ⓜ iMax Solution Dyed Nylon
 - Ⓜ 1/10 gauge – dense construction
 - Ⓜ Flammability: Bfl-s1
 - Ⓜ Use class 33 – Heavy commercial use
- **Wear resistant and easy to maintain**



iMax[®] is a unique SDN, **solution dyed nylon**, that combines the superb resilience of a high-quality polyamide with the benefits of a solution dyed yarn.
Colourfast, carefree & wear-resistant: **iMax**[®] stands for guaranteed longevity, which also makes it the ideal yarn for **contract carpet**.

MAXIMA TILE

Type of manufacture (carpet tile)	ISO 2424		1/10 Loop Pile (tufted)
Dimensions	EN ISO 24342	cm	50cm x 50cm (20 tiles/box)
Primary backing	ISO 2424		Polyester non-woven
Secondary backing	ISO 2424		Bitumen
Pile fibre composition	ISO 2424		iMax® 100% Solution Dyed Nylon (SDN)
Total thickness	ISO 1765	mm	5,6
Effective pile thickness	ISO 1766	mm	2,6
Total mass	ISO 8543	g/m ²	4.015
Total pile mass	ISO 2424	g/m ²	520
Effective pile mass	ISO 8543	g/m ²	340
Pile density	ISO 8543	g/cm ³	0,131
Number of tufts	ISO 1763	/dm ²	1.810
Static electrical propensity	ISO 6356	kV	≤ 2
Use classification	EN 1307		33 Contract use - Heavy
Luxury rating	EN 1307		LC1
Thermal resistance	ISO 8302	m ² .K/W	0,09
Dimensional stability	EN 986	%	≤ 0,20
Flammability	EN 13501-1		Bfl - s1 Loose laid (2020/211-1)
Prodis - GUT	www.pro-dis.info		127826
DOP			1008#IL0011
Laying direction			



85 - 90



77E5E731

www.gut-prodis.eu

EN 14041

NB: 2401 FOR USE AS FLOOR COVERING IN BUILDINGS.

DOP: 1008#IL0011

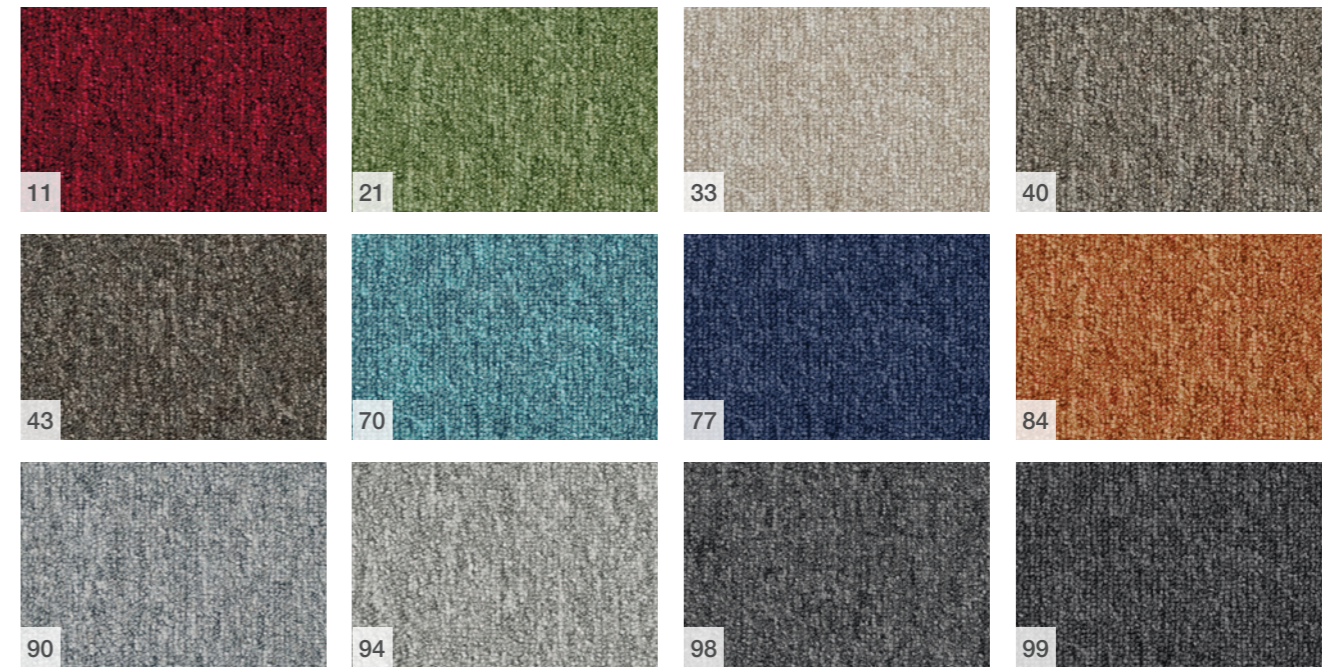
Associated Weavers Europe NV
Weverijstraat 1
B - 9600 Ronse

MEDUSA TILE

Type of manufacture (carpet tile)	ISO 2424		1/10 Loop Pile (tufted)
Dimensions	EN ISO 24342	cm	50cm x 50cm (20 tiles/box)
Primary backing	ISO 2424		Polyester non-woven
Secondary backing	ISO 2424		Bitumen
Pile fibre composition	ISO 2424		iMax® 100% Solution Dyed Nylon (SDN)
Total thickness	ISO 1765	mm	5,4
Effective pile thickness	ISO 1766	mm	2,4
Total mass	ISO 8543	g/m ²	4.000
Total pile mass	ISO 2424	g/m ²	505
Effective pile mass	ISO 8543	g/m ²	280
Pile density	ISO 8543	g/cm ³	0,117
Number of tufts	ISO 1763	/dm ²	1.970
Static electrical propensity	ISO 6356	kV	≤2
Use classification	EN 1307		33 Contract use - Heavy
Luxury rating	EN 1307		LC1
Thermal resistance	ISO 8302	m ² .K/W	0,09
Dimensional stability	EN 986	%	≤ 0,20
Flammability	EN 13501-1		Bfl - s1 Loose laid (2020/210-1)
Prodis - GUT	www.pro-dis.info		127825
DOP			1008#IL0011
Laying direction			



77 - 11



5CEEF6DE

www.gut-prodis.eu

EN 14041

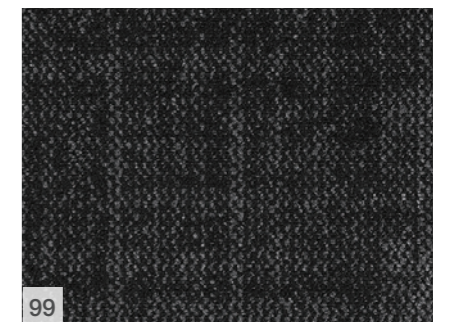
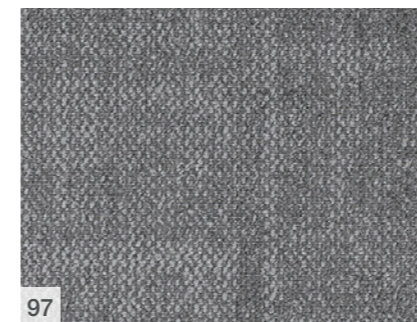
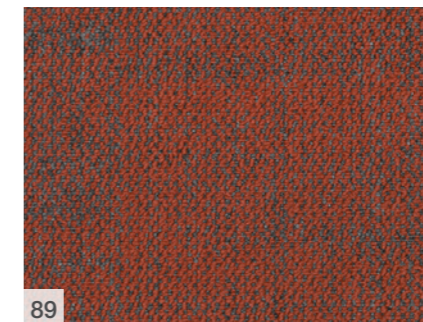
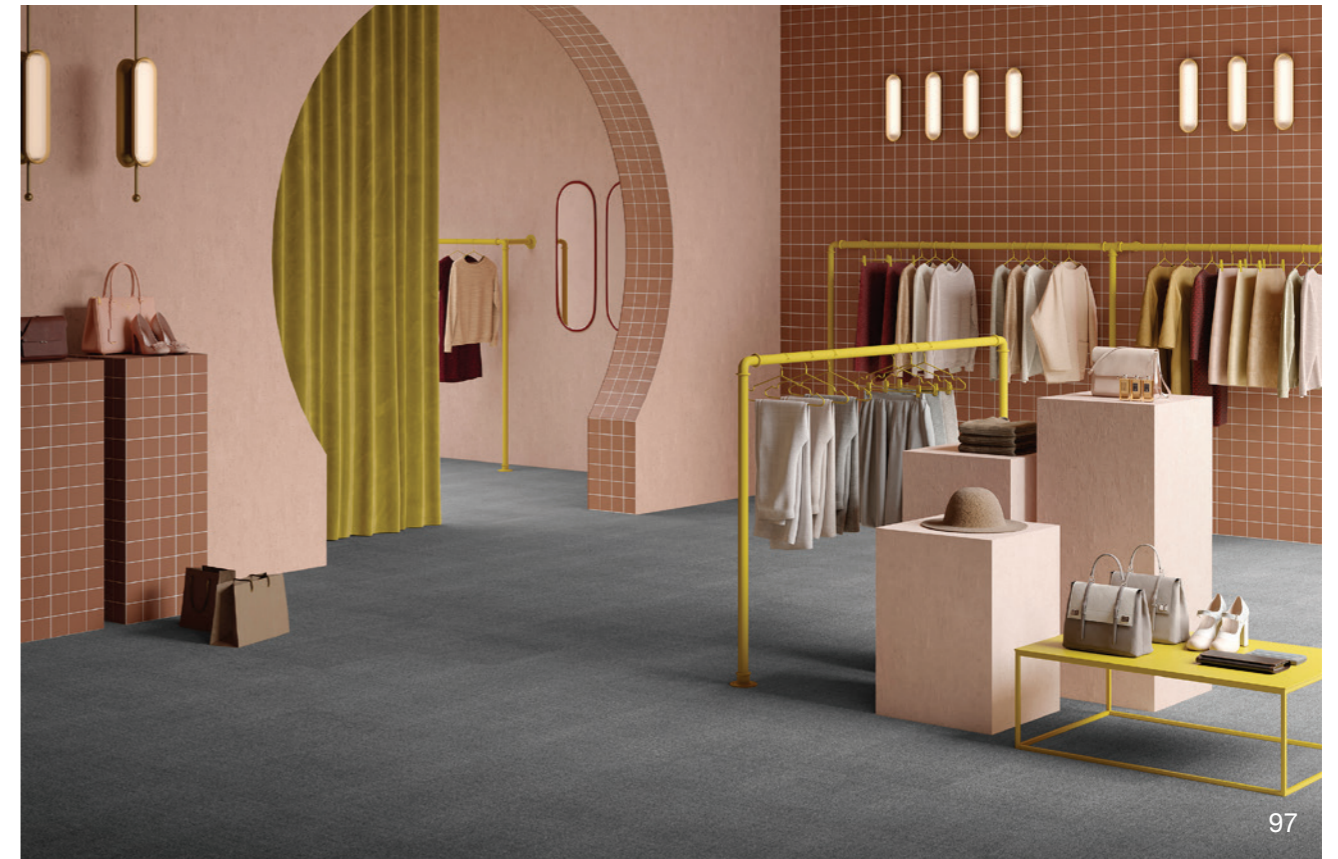
NB: 2401

DOP: 1008#IL0011

Associated Weavers Europe NV
Weverijstraat 1
B - 9600 Ronse

MANTRA TILE

Type of manufacture (carpet tile)	ISO 2424		1/10 Loop Pile (tufted)
Dimensions	EN ISO 24342	cm	50cm x 50cm (24 tiles/box)
Primary backing	ISO 2424		Polyester non-woven
Secondary backing	ISO 2424		Bitumen
Pile fibre composition	ISO 2424		100% Solution Dyed Nylon (SDN)
Total thickness	ISO 1765	mm	5,2
Effective pile thickness	ISO 1766	mm	2,2
Total mass	ISO 8543	g/m ²	3.606
Total pile mass	ISO 2424	g/m ²	350
Effective pile mass	ISO 8543	g/m ²	253
Pile density	ISO 8543	g/cm ³	0,114
Number of tufts	ISO 1763	/dm ²	2.301
Static electrical propensity	ISO 6356	kV	≤2
Use classification	EN 1307		33 Contract use - Heavy
Luxury rating	EN 1307		LC1
Thermal resistance	ISO 8302	m ² .K/W	0,09
Dimensional stability	EN 986	%	≤ 0,20
Flammability	EN 13501-1		Bfl - s1 Loose laid (2021/117-1)
Prodis - GUT	www.pro-dis.info		B9DEFB5F
DOP			1008#IL0011
Laying direction			



EN 14041

NB: 2401

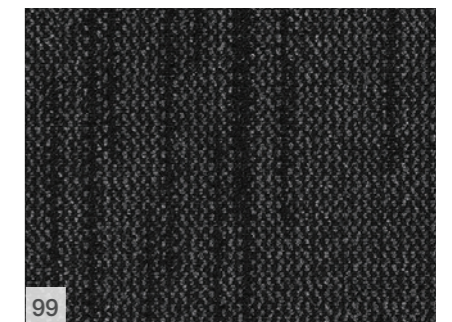
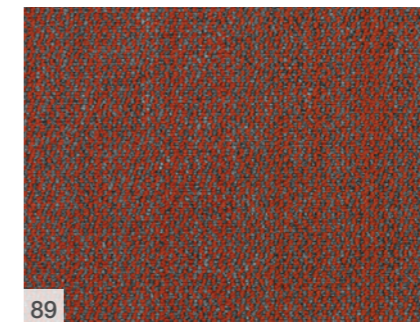
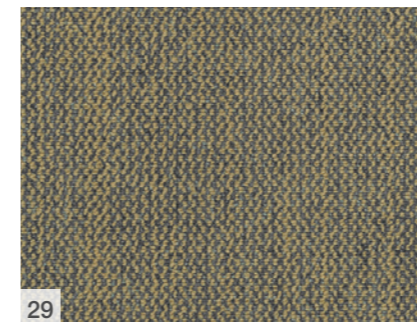
DOP: 1008#IL0011

Associated Weavers Europe NV
Weverijstraat 1
B - 9600 Ronse

SDN YARN

MARVEL TILE

Type of manufacture (carpet tile)	ISO 2424		1/10 Loop Pile (tufted)
Dimensions	EN ISO 24342	cm	50cm x 50cm (24 tiles/box)
Primary backing	ISO 2424		Polyester non-woven
Secondary backing	ISO 2424		Bitumen
Pile fibre composition	ISO 2424		100% Solution Dyed Nylon (SDN)
Total thickness	ISO 1765	mm	5,2
Effective pile thickness	ISO 1766	mm	2,2
Total mass	ISO 8543	g/m ²	3.606
Total pile mass	ISO 2424	g/m ²	350
Effective pile mass	ISO 8543	g/m ²	253
Pile density	ISO 8543	g/cm ³	0,114
Number of tufts	ISO 1763	/dm ²	2.301
Static electrical propensity	ISO 6356	kV	≤2
Use classification	EN 1307		33 Contract use - Heavy
Luxury rating	EN 1307		LC1
Thermal resistance	ISO 8302	m ² .K/W	0,09
Dimensional stability	EN 986	%	≤ 0,20
Flammability	EN 13501-1		Bfl - s1 Loose laid (2021/117-1)
Prodis - GUT	www.pro-dis.info		1FED880D
DOP			1008#IL0011
Laying direction			



EN 14041

NB: 2401

DOP: 1008#IL0011

Associated Weavers Europe NV
Weverijstraat 1
B - 9600 Ronse

SDN YARN

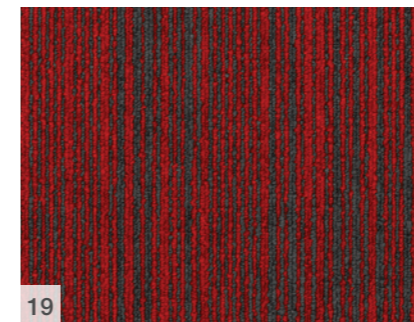
FOR USE AS FLOOR COVERING IN BUILDINGS.

MAMBO TILE

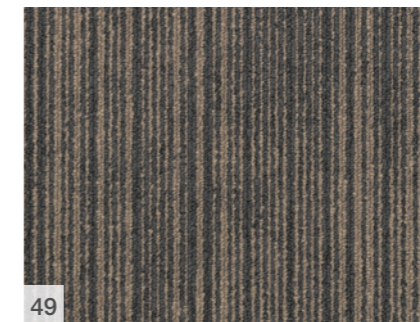
Type of manufacture (carpet tile)	ISO 2424		1/10 Loop Pile (tufted)
Dimensions	EN ISO 24342	cm	50cm x 50cm (24 tiles/box)
Primary backing	ISO 2424		Polyester non-woven
Secondary backing	ISO 2424		Bitumen
Pile fibre composition	ISO 2424		100% Solution Dyed Nylon (SDN)
Total thickness	ISO 1765	mm	5,9
Effective pile thickness	ISO 1766	mm	2,6
Total mass	ISO 8543	g/m ²	4.637
Total pile mass	ISO 2424	g/m ²	500
Effective pile mass	ISO 8543	g/m ²	323
Pile density	ISO 8543	g/cm ³	0,124
Number of tufts	ISO 1763	/dm ²	1.950
Static electrical propensity	ISO 6356	kV	≤2
Use classification	EN 1307		33 Contract use - Heavy
Luxury rating	EN 1307		LC1
Thermal resistance	ISO 8302	m ² .K/W	0,10
Dimensional stability	EN 986	%	≤ 0,20
Flammability	EN 13501-1		Bfl - s1 Loose laid (2021/106-1)
Prodis - GUT	www.pro-dis.info		782D6F6B
DOP			1008#IL0011
Laying direction			



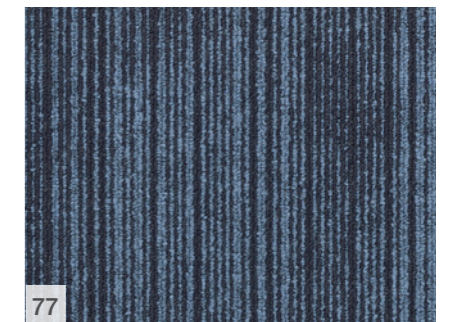
96 - 99



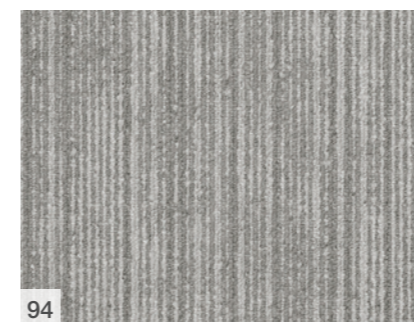
19



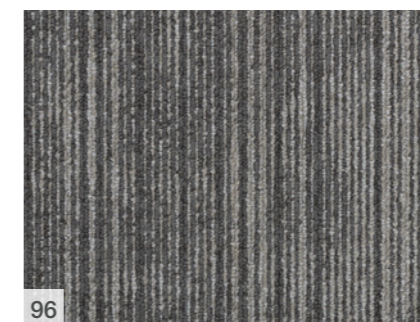
49



77



94



96



99

EN 14041

NB: 2401

DOP: 1008#IL0011

Associated Weavers Europe NV
Weverijstraat 1
B - 9600 Ronse

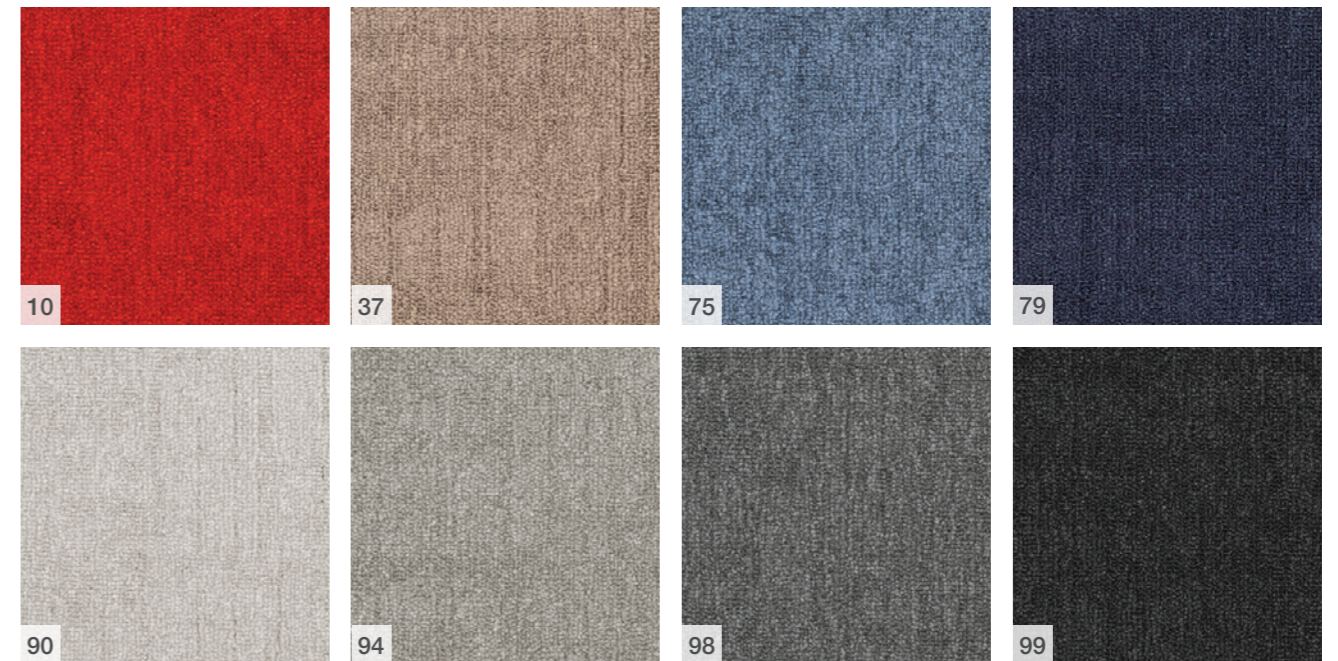
FOR USE AS FLOOR COVERING IN BUILDINGS.




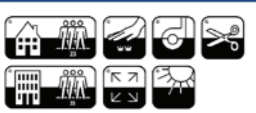
MATRIX TILE

Type of manufacture (carpet tile)	ISO 2424		1/10 Loop Pile (tufted)
Dimensions	EN ISO 24342	cm	50cm x 50cm (20 tiles/box)
Primary backing	ISO 2424		Polyester non-woven
Secondary backing	ISO 2424		Bitumen
Pile fibre composition	ISO 2424		100% Solution Dyed Nylon (SDN)
Total thickness	ISO 1765	mm	6,7
Effective pile thickness	ISO 1766	mm	3,2
Total mass	ISO 8543	g/m ²	4.127
Total pile mass	ISO 2424	g/m ²	650
Effective pile mass	ISO 8543	g/m ²	426
Pile density	ISO 8543	g/cm ³	0,135
Number of tufts	ISO 1763	/dm ²	2.016
Static electrical propensity	ISO 6356	kV	≤2
Use classification	EN 1307		33 Contract use - Heavy
Luxury rating	EN 1307		LC2
Thermal resistance	ISO 8302	m ² .K/W	0,11
Dimensional stability	EN 986	%	≤ 0,20
Flammability	EN 13501-1		Bfl - s1 Loose laid (2021/107-1)
Prodis - GUT	www.pro-dis.info		4D1DDABC
DOP			1008#IL0011
Laying direction			




96 - 99




EN 14041



NB: 2401



DOP: 1008#IL0011

Associated Weavers Europe NV
Weverijstraat 1
B - 9600 Ronse

FOR USE AS FLOOR COVERING IN BUILDINGS.



10/2020

Associated Weavers Europe NV
Weverijstraat 1 - 9600 Ronse - Belgium



T +32 55 230 211 - F +32 55 215 551
info@awe.be - www.associated-weavers.com